



BYOKANE  
WORLD

Trust and technology that connects the world.

東京三菱  
TOKYO BYOKANE

## ABOUT US

# Trust and technology that connects the world.

Established in 1941, Tokyo Byokane has continued to meet a wide variety of market demands from various industries including automotive, office equipment and electronics, high quality precision equipment, and fasteners of all sizes from the world - class JCIS standards to various custom - made parts. Tokyo Byokane will continue to contribute to the advancement of social and economic growth as we strive to become a global enterprise founded on the trust of our customers and affiliated manufacturers.

## OUR MAIN TECHNOLOGY•PRODUCTS



Precision Screws



Specialized Cold  
Forming



Metal Stamping



Cutting



Die Casting



MIM



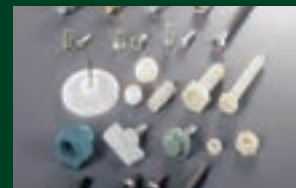
Sintering



Springs



Resin Molding



Pioneering Materials  
Selection



Assembly



Factory Automation

# DOMESTIC

Tokyo HQ	1941 est.	Nagano	1972 ~
Tochigi	1969 ~	Nanshin	1969 ~
Tsuchiura	1978 ~	Shizuoka	1959 ~
Kumagaya*	1962 ~	Nagoya	1981 ~
Maebashi	1980 ~	Shiga	1989 ~
Hiratsuka	1971 ~	Fukuoka	1982 ~
Morioka	1985 ~	Oita	1990 ~
Sendai	1973 ~	Osaka	2022 ~
Koriyama	1970 ~		

\*Sales / Factory



## OVERSEAS LOCATIONS

Over fifty years of global expansion.

Developing business relations with over 15 established overseas locations.

### SALES OFFICES

Atlanta	1988~
Chicago	2023~
Mexico	2017~
Singapore	1974~
Malaysia	1989~
Thailand(Bangkok)	1988~
Thailand(Sriracha)	2017~
Indonesia	1997~
Philippines	1996~
Hanoi	2007~
Ho Chi Minh	2019~

Hong Kong	1969~
Shanghai	1997~
Zhuhai	2001~
Taiwan	1977~

### FACTORY

Vietnam(Hanoi)	2007~
Philippines(Cebu)	1997~
Thailand(Saraburi)	2013~
Shenzhen	1991~
Shanghai	2003~
Shanghai(Chuansha)	2018~
Dongguan	1995~



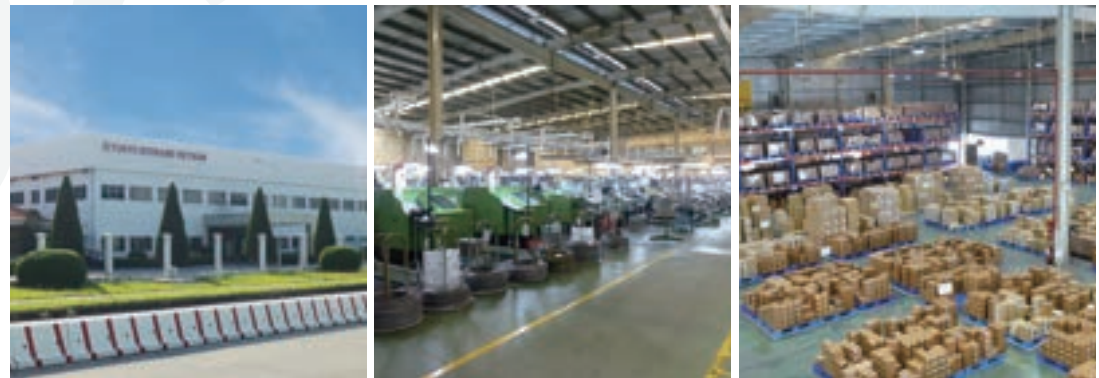
## RESPONDING TO GLOBAL NEEDS (Procurement, Sales, and Logistics)

In addition to trading commerce, continuously developing effective methods for quality assurance, manufacturing, and delivery.

With 7 manufacturing locations and 14 sales offices globally, each branch strives to meet the various needs of customers domestically and abroad.



### Overview/Vietnam



Overview of  
Manufactured  
Products

JIS Standard  
Machine and  
Tapping Screws

Taptite Screws  
(Taptite Licensee)

Specialized  
Cold Forming

Washer-Assembled  
Screws(SEMS)

etc...

Manufacturing  
Process of Vietnam  
Factory

Material

Forming

Rolling

Heat Treatment

Plating

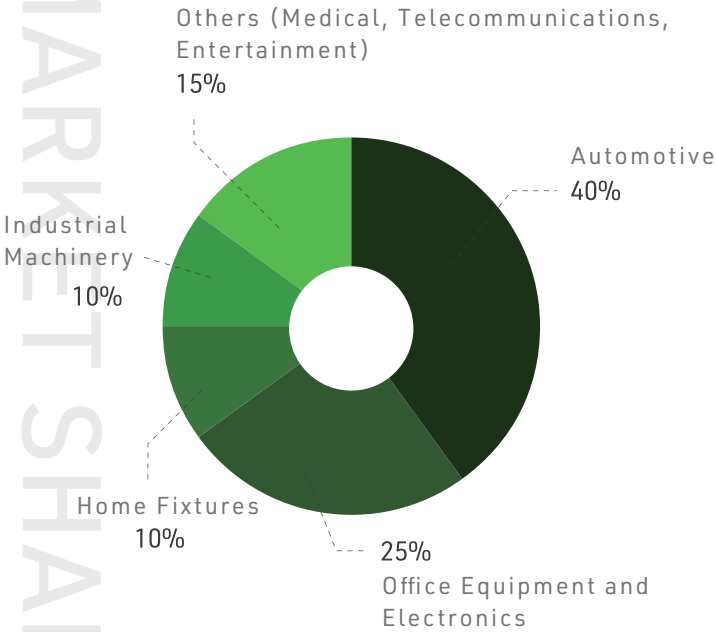
Inspection

Shipping



MARKET AND PRODUCT SHARE

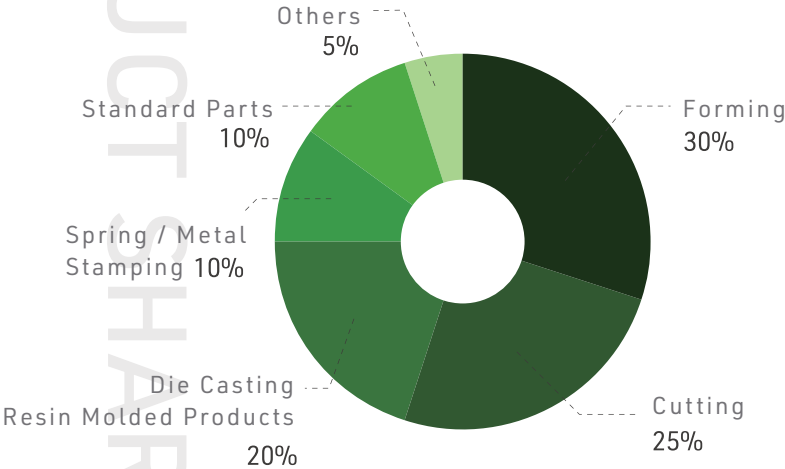
Market Share



The global market share for automotive parts continues to expand for Byokane due to office equipment and electronic manufacturers' increased production involvement in the ever- growing automotive industry.

Product Share

Technical capabilities include world-class Japanese forming technologies, in addition to providing consultation on various materials and processing methods such as die casting and resin molded products.





## RECOMMENDATION / SOLUTION

With advancements in IoT, energy resources, and the expansion of AI usage, our solutions meet the various demands of industries and new technologies.

### TECHNOLOGY

#### Technology

- ✓ Injection molding of carbon, magnesium, etc.
- ✓ Specialized molding of aluminum
- ✓ Specialized resin molding to eliminate assembly
- ✓ Forming technology with increased material deformation rate
- ✓ New materials and manufacturing methods

### FASTENING METHODS

#### Fastening Methods

- ✓ Provide in-house calculation and analysis (torque, axial forces, etc.) of suitable fastening conditions to customer designs.
- ✓ Proposal for fastening method with consideration to characteristics of the mating part
- ✓ Product and equipment proposals for automated and robotic fastening methods

### OPERATIONAL SAVING

#### Operational Savings

- ✓ Proposals to improve on-site ease-of-use and efficiency by reducing process time, errors, and customer assembly through component integration.
- ✓ Propose solutions through dedicated equipments, automated assembly and inspection machines for issues that may arise on site.

## QUALITY ASSURANCE / IMPROVEMENT

**BYOKANE**  
*Quality*

Provide quality assurance and product improvement through the evaluation of critical values using various in-house inspection equipment.

Always prepared to handle any product issues by performing a breakdown analysis in order to deliver the best solution and improvement methods.

### In-house Inspection Machine (Overview)



XRF Analyzer  
(RoHS Compatible)



Spectrophotometer  
(Hexavalent Chromium  
Analysis Compatible)



X-ray Fluorescence  
Film Thickness  
Analysis Machine



Image Dimension  
Analysis (Max 99 points  
batch measurement)



Salt spray tester  
(SST / CAS test type)



Digital Microscope (Max  
Lens 1000x)



Measuring Microscope



Automated Cutting  
Machine



Automated Resin  
Embedding Machine



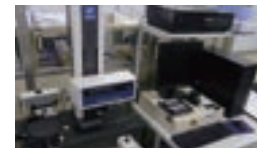
Automated Polishing  
Machine



QC-PRO  
(Automated Inspection  
Sheet Software)



Axial Forces and Torque  
Analyzers (1N.m / 5N.m /  
20N.m)



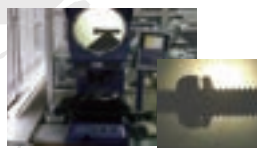
Surface Texture / Contour  
Shape Analysis Machine



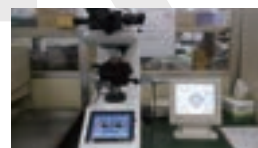
Roundness Analysis  
Machine



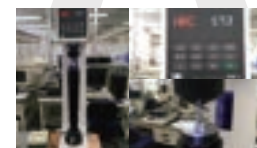
Universal Trial Machine



Projector



Vickers Analysis  
Machine



Rockwell Analysis  
Machine



## CREATES AUTOMATED EQUIPMENT

Tokyo Byokane is dedicated to supporting the  
automotive and energy-saving measures of our customers.

With our affiliate, Kenritsu Denko Co. Ltd., continuously striving to meet the demand for automation and energy-saving measures by designing automated facilities. Consultations are readily available for any questions regarding the remodeling, repairing, and maintenance of each equipment.



Sales Consultation

Joint  
Consultation

SYSTEM ENGINEERING  
KENRITSU DENKO

Technical Consultation  
Design & Development



### About Kenritsu Denko Co., Ltd.

〒360-0111 2632-1 Oshikiri, Kumagaya City, Saitama / TEL:048-536-1155

Kenritsu Denko Co., Ltd. designs and manufactures equipment utilized in a variety of fields, including automated public facilities, home appliances, automotives, and aircrafts. Products range from electronic highway displays to automated fountains installed in parks throughout Kawasaki and Sapporo. They also include waterways and water purification plants, electric powerplants, and gas manufacturing and storage facilities.

# TOKYO BYOKANE

## > HEAD OFFICE

〒130-0015  
2-5-14 Yokoami, Sumida Ward, Tokyo  
TEL : 03-3626-1221 / FAX : 03-3623-6758

Company Name 株式会社東京鋳業  
English Name TOKYO BYOKANE CO.,LTD.  
Established May 1941

Capital ¥320 million  
Closing Period December 31st

## ◇ DOMESTIC

OFFICE	ADDRESS	TEL
Morioka	〒020-0866 6-34-12 Motomiya, Morioka City, Iwate Pref.	019-656-5288
Sendai	〒984-0032 2-16-1 Arai, Wakabayashi Ward, Sendai City, Miyagi Pref.	022-287-2826
Koriyama	〒963-0209 3-202 Gozen Minami, Koriyama City, Fukushima Pref.	024-961-8231
Tochigi	〒327-0812 263-1 Machiya-cho, Sano City, Tochigi Pref.	0283-27-2781
Tsuchiura	〒315-0056 1943-87 Kamiinayoshi, Kasumigaura City, Ibaraki Pref.	0299-59-0841
Kumagaya	〒360-0111 2637-1 Oshikiri, Kumagaya City, Saitama Pref.	048-536-2111
Maebashi	〒379-2147 281-2 Kamesato-cho, Maebashi City, Gunma Pref.	027-265-3146
Hiratsuka	〒254-0018 2-4-22 Higashishindo, Hiratsuka City, Kanagawa Pref.	0463-54-1711
Nagano	〒389-0804 2191-5 Oazatokura, Chikuma City, Nagano Pref.	026-275-2725
Nanshin	〒399-4601 1378 Oazanakaminowa, Minowa-machi, Kamiina-gun, Nagano Pref.	0265-70-1281
Shizuoka	〒436-0040 105 Shobugaike, Kakegawa City, Shizuoka Pref.	0537-61-6080
Nagoya	〒486-0817 9-6-9 Higashino-cho, Kasugai City, Aichi Pref.	0568-89-7007
Shiga	〒526-0834 31 Ohtatsumi-cho, Nagahama City, Shiga Pref.	0749-62-8570
Osaka	〒564-0051 7F Esaka Chuo Building, 1-21 Toyotsu-cho, Suita City, Osaka Pref.	06-6310-8282
Fukuoka	〒818-0134 3-13-40 Ohsano, Dazaifu City, Fukuoka Pref.	092-924-9393
Oita	〒873-0012 1517-5 Oazanaka, Kitsuki City, Oita Pref.	0978-64-0666
FACTORY	ADDRESS	TEL
Kumagaya Plant	〒360-0111 2637-1 Oshikiri, Kumagaya City, Saitama Pref.	048-536-4197

## ◇ OVERSEAS

OFFICE	ADDRESS	TEL
ATLANTA	4025 STEVE REYNOLDS BOULEVARD, SUITE 114, NORCROSS, GA, 30093 U.S.A	+1-770-923-3228
CHICAGO	10 N Martingale Rd Suite 400, Schaumburg, IL 60173	+1-770-617-2650
MEXICO	AV. RIO SEGURA 161A COL. PARQUE TECNO INDUSTRIAL CASTRO DEL RIO, C.P 36810 IRAPUATO, GUANAJUATO, MEXICO	+52-462-800-6369
SINGAPORE	NO3, 5TH LOK YANG ROAD, JURONG TOWN, 629754 SINGAPORE	+65-62654422
MALAYSIA	SUITE L17-08, LEVEL 17, PJX - HM SHAH TOWER, PERSIARAN BARAT, 46050 PETALING JAYA, SELANGOR, MALAYSIA	+603-7931-9292
THAILAND (BANGKOK)	No9/67-68 MOO 5, PHAHOLYOTHIN ROAD, TAMBOL KLONG NUENG, AMPHUR KLONGLUANG PATUMTHANI, 12120 THAILAND	+66-2-5160916
THAILAND (SRIRACHA)	ROOM 1212, HARBOR MALL LEVEL 12, 4/222 MOO 10, SUKHUMVIT ROAD, TUNGSUKHA, SRIRACHA, CHONBURI 20230 THAILAND	+66-3-3030760
INDONESIA	SKYLINE BUILDING 9TH FLOOR, J.L.M.H.THAMRIN No9JAKARTA, 10340 INDONESIA	+62-21-3901439
PHILIPPINES	LOT C2-6B CARMELRAY INDUSTRIAL PARK 2, BRGY PUNTA, CALAMBA CITY, LAGUNA, PHILIPPINES 4027	+63-49-5087899
HANOI	PLOT P10-P11, THANG LONG INDUSTRIAL PARK, VONG LA, DONG ANH HANOI, VIETNAM	+84-24-39590061
HO CHI MINH	No.2 ROOM, 8FLOOR, PEARL PLAZA BUILDINGS, 561A DIEN BIEN PHU, WARD 25, BINH THANH DISTRICT, HO CHI MINH CITY, VIETNAM	+84-28-710-99590
HONG KONG	1713, 1717-1722, 17TH FLOOR, PACIFIC TRADE CENTRE, 2KAI HING ROAD, KOWLOON BAY, HONG KONG	+852-27959633
SHANGHAI	1ST&2NDFLOOR, NO.4 BUILDING, NO.115, FUTEXI 1ST ROAD, PILOT FREE TRADE ZONE, SHANGHAI 200131, CHINA	+86-21-50460058
ZHUHAI	No31, ZHUHAI FREE TRADE ZONE, ZHUHAI, 519030 CHINA	+86-756-8686008
TAIWAN	10F., NO.31, SEC. 3, ZHONGSHAN N. RD., ZHONGSHAN DIST., TAIPEI CITY, 10461 TAIWAN (R.O.C.)	+886-2-2595-7187
FACTORY	ADDRESS	TEL
HANOI	PLOT P10-P11, THANG LONG INDUSTRIAL PARK, VONG LA, DONG ANH HANOI, VIETNAM	+84-24-39590061
CEBU	5th STREET CORNER 3rd AVENUE MACTAN EXPORT PROCESSING ZONE1, IBO, LAPU-LAPU CITY, CEBU, PHILIPPINES 6015	+63-32-3403753
THAILAND (SARABURI)	71/6 MOO 6 TAMBON NONGPLAMOH AMPHUR NONGKHAEE SARABURI, 18140 THAILAND	+66-36-373735-6
SHENZHEN	WENGUANG VILLAGE INDUSTRIAL PARK, XILI TOWN, NANSHAN DISTRICT, SHENZHEN, 518055 CHINA	+86-755-2662-1171
SHANGHAI	WEST AREA 1ST FLOOR, 47 BUILDING, NO11 DEBAO ROAD, PILOT FREE TRADE ZONE, SHANGHAI 200131, CHINA	+86-21-50483966
SHANGHAI (CHUANSHA)	1ST FLOOR B AREA, BUILDING 1, NO.101 LUJI ROAD, PUDONG DISTRICT, SHANGHAI 201399, CHINA	+86-21-2095-8525
DONGGUAN	YONG TONG GUAN LI QU, CHANG AN TOWN, DONG GUAN CITY, GUANG DONG PROVINCE, 511768 CHINA	+86-769-8531-0353

## AFFILIATES / ISO CERTIFICATION STATUS / QUALITY ENVIRONMENTAL POLICY

### Affiliates

KENRITSU DENKO CO., LTD.	BYOKANE(MALAYSIA)SDN.BHD.
Tomizen Co.,Ltd.	TOKYO BYOKANE(THAILAND)CO.,LTD.
BYOKANE(U.S.A )CORPORATION	TOKYO BYOKANE PHILIPPINES CORPORATION
BYOKANE MEXICO,S.A. DE C.V.	TOKYO BYOKANE VIETNAM CO.,LTD
TOKYO BYOKANE CO., (HONG KONG) LTD.	TOHO SEIKO ENGINEERING (SHENZHEN) INC. LTD.
TOKYO BYOKANE (SHANGHAI) CO., LTD.	TOHO SEIKO PRECISION SPRING (SHANGHAI) CO., LTD.
TOKYO BYOKANE CO., (ZHUHAI) LTD.	DONGGUAN CROWN SCREW CO., LTD.
TAIWAN BYOKANE CO., LTD. (TAIPEI BRANCH)	SHIBASAKI TB(THAILAND)CO.,LTD.
TOKYO BYOKANE(SINGAPORE)PTE.LTD.	TOKYO STEEL PHILIPPINES CORPORATION

### ISO・IATF Acquisitions

《ISO9001 Acquisitions》	《ISO14001 Acquisitions》
Tokyo HQ, USA, Singapore, Thailand, Vietnam, Malaysia, Philippines, Hong Kong, Shanghai, Taiwan, Zhuhai, Shanhai Factory, Shenzhen Factory, Thailand Factory, Cebu Factory, Dongguan Factory	Tokyo HQ, Singapore, Thailand, Vietnam, Malaysia, Philippines, Hong Kong, Shanghai, Taiwan, Zhuhai, Shanghai Factory, Shenzhen Factory, Cebu Factory, Dongguan Factory
※ 《IATF16949 Acquisition》 ・ ・ ・ Shanghai Factory, Thailand Factory, Vietnam Factory	

### Quality and Environmental Policy

In accordance with the company management policy/philosophy and CSR policy and guidelines, we strive to continuously develop and improve our quality / environment management system.

1) Maintain customer satisfaction and proactively propose products and services that meet customer requirements.	2) Comply with laws, regulations and standards pertaining to the industry.	3) Employee involvement for the improvement of quality and environmental standards.
4) Invest in resource and energy conservation, waste reduction, and recycling to reduce pollution and to protect the environment.	5) Provide environmentally friendly products through the regulated control of chemical substances.	
6) In promoting these activities, establish a quality / environmental management system which furthers continued improvements.	7) This quality and environmental policy is a mandated disclosure to all members of the company and may also be disclosed to any interested parties upon request.	



東京鋏兼  
TOKYOBYOKANE

✓ HEAD OFFICE

〒130-0015

2-5-14 Yokoami, Sumida Ward, Tokyo

TEL : 03-3626-1221 FAX : 03-3623-6758

✓ DOMESTIC

Morioka / Sendai / Koriyama / Tochigi / Tsuchiura / Kumagaya / Maebashi  
Hiratsuka / Nagano / Nanshin / Shizuoka / Nagoya / Shiga / Osaka  
Fukuoka / Oita / Kumagaya Plant

✓ OVERSEAS

OFFICE

ATLANTA / CHICAGO / MEXICO / SINGAPORE / MALAYSIA / THAILAND(BANGKOK)  
THAILAND(SRIRACHA) / INDONESIA / PHILIPPINES / HANOI / HO CHI MINH  
HONG KONG / SHANGHAI / ZHUHAI / TAIWAN

FACTORY

HANOI / CEBU / THAILAND(SARABURI) / SHENZHEN / SHANGHAI  
SHANGHAI(CHUANSHA) / DONGGUAN